

Product Contents

pGL4.26[*luc2*/minP/Hygro] Vector:

Part No.	Size
E844A	20µg



Instructions for use of this product can be found in the pGL4 Luciferase Reporter Vectors Technical Manual #TM259, available online at: www.promega.com/tbs

Description: The pGL4.26[*luc2*/minP/Hygro] Vector^(a,b,c,d) encodes the luciferase reporter gene *luc2* (*Photinus pyralis*) and is designed for high expression and reduced anomalous transcription. The vector contains a multiple cloning region for insertion of a response element of interest upstream of a minimal promoter and the *luc2* gene. *luc2* is a synthetically-derived luciferase sequence with humanized codon optimization. The vector backbone contains an ampicillin resistance gene to allow selection in *E. coli* and a mammalian selectable marker for hygromycin resistance.

See the *pGL4 Luciferase Reporter Vectors Technical Manual* #TM259 for more information.

Concentration: 1µg/µl.

GenBank® Accession Number: DQ904458.

Storage Buffer: The pGL4.26[*luc2*/minP/Hygro] Vector is supplied in 10mM Tris-HCl (pH 7.4), 1mM EDTA.

Storage Conditions: See the product information label for storage recommendations. Avoid multiple freeze-thaw cycles and exposure to frequent temperature changes. These fluctuations can greatly alter product stability. See the expiration date on the product information label.

Usage Note: Concentration gradients may form in frozen products and should be dispersed upon thawing. Mix well prior to use.

Quality Control Assays

Nuclease Assay: Following incubation of 1µg of the vector in restriction digest buffer B at 37°C for 16 hours, no evidence of nuclease activity is detected by agarose gel electrophoresis.

Physical Purity: $A_{260}/A_{280} \geq 1.80$, $A_{260}/A_{250} \geq 1.05$ at pH 7.4.

Sequence: The pGL4.26[*luc2*/minP/Hygro] Vector has been completely sequenced and has 100% identity with the published sequence, available at: www.promega.com/vectors/

Part# 9PIE844
Revised 2/09



Promega

Promega Corporation

2800 Woods Hollow Road	
Madison, WI 53711-5399	USA
Telephone	608-274-4330
Toll Free	800-356-9526
Fax	608-277-2516
Internet	www.promega.com

PRODUCT USE LIMITATIONS, WARRANTY, DISCLAIMER

Promega manufactures products for a number of intended uses. Please refer to the product label for the intended use statements for specific products. Promega products contain chemicals which may be harmful if misused. Due care should be exercised with all Promega products to prevent direct human contact.

Each Promega product is shipped with documentation stating specifications and other technical information. Promega products are warranted to meet or exceed the stated specifications. Promega's sole obligation and the customer's sole remedy is limited to replacement of products free of charge in the event products fail to perform as warranted. Promega makes no other warranty of any kind whatsoever, and SPECIFICALLY DISCLAIMS AND EXCLUDES ALL OTHER WARRANTIES OF ANY KIND OR NATURE WHATSOEVER, DIRECTLY OR INDIRECTLY, EXPRESS OR IMPLIED, INCLUDING, WITHOUT LIMITATION, AS TO THE SUITABILITY, PRODUCTIVITY, DURABILITY, FITNESS FOR A PARTICULAR PURPOSE OR USE, MERCHANTABILITY, CONDITION, OR ANY OTHER MATTER WITH RESPECT TO PROMEGA PRODUCTS. In no event shall Promega be liable for claims for any other damages, whether direct, incidental, foreseeable, consequential, or special (including but not limited to loss of use, revenue or profit), whether based upon warranty, contract, tort (including negligence) or strict liability arising in connection with the sale or the failure of Promega products to perform in accordance with the stated specifications.

^(a)READ THIS FIRST BEFORE OPENING PRODUCT.

The sale of this product and its use by the purchaser are subject to the terms of a limited use label license, the full text of which is shipped with this product and also available at: www.promega.com/LULL. That text must be read by the purchaser prior to opening this product to determine whether the purchaser agrees that all use of the product shall be in accordance with the license terms. If the purchaser is not willing to accept the terms of the limited use label license, Promega is willing to accept the return of the unopened product and provide the purchaser with a full refund. However, if the product is opened for any reason, then the purchaser agrees to be bound by the terms of the limited use label license.

^(b)Patents Pending.

^(c)Australian Pat. No. 2001-285278 and other patents pending.

^(d)The method of recombinant expression of *Coleoptera* luciferase is covered by U.S. Pat. Nos. 5,583,024, 5,674,713 and 5,700,673. A license (from Promega for research reagent products and from The Regents of the University of California for all other fields) is needed for any commercial sale of nucleic acid contained within or derived from this product.

© 2006–2009 Promega Corporation. All Rights Reserved.

GenBank is a registered trademark of the U.S. Department of Health and Human Services.

Products may be covered by pending or issued patents or may have certain limitations. Please visit our Web site for more information.

All specifications are subject to change without prior notice.

Product claims are subject to change. Please contact Promega Technical Services or access the Promega online catalog for the most up-to-date information on Promega products.

Part# 9PIE844
Printed in USA, Revised 2/09.

pGL4.26[*luc2*/minP/Hygro] Vector Features List and Maps:

Multiple cloning region	1–70
Minimal promoter	78–108
<i>luc2</i> reporter gene	141–1793
SV40 late poly(A) region	1828–2049
SV40 early enhancer/promoter	2097–2515
Synthetic hygromycin (Hyg ^r) coding region	2540–3577
Synthetic poly(A) region	3601–3649
Reporter Vector primer 4 (RVprimer4) binding region	3716–3735
<i>ColE1</i> -derived plasmid replication origin	3973
Synthetic β-lactamase (Amp ^r) coding region	4764–5624
Synthetic poly(A) signal/transcriptional pause region	5729–5882
Reporter Vector primer 3 (RVprimer3) binding region	5831–5850

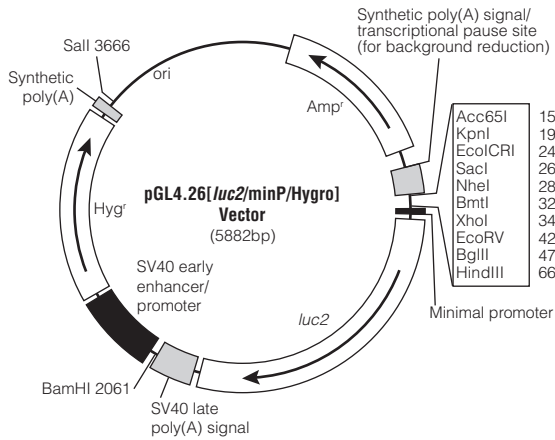


Figure 1. pGL4.26[*luc2*/minP/Hygro] Vector map.

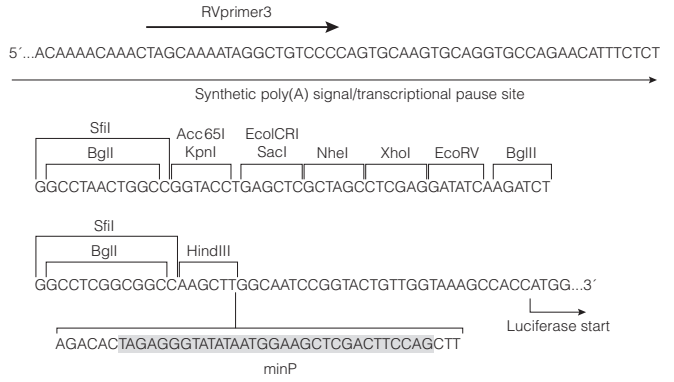


Figure 2. Multiple cloning region of the pGL4.26[*luc2*/minP/Hygro] Vector.

Sequence information and restriction enzyme tables for the pGL4 Vectors are available online at: www.promega.com/vectors/

For more information see the *pGL4 Luciferase Reporter Vectors Technical Manual* #TM259, online at: www.promega.com/tbs/